

# **Wood-Mizer®**

*from forest to final form®*

## **OPERATING INSTRUCTIONS**

**MES203EH2S-S (FM300 s)  
3HP DUST COLLECTOR  
WITH TWO COTTON FILTER BAGS  
3880 m<sup>3</sup>/h, 3PH x 400 V, 50 Hz**



Please keep this instruction manual for future reference.

## CONTENTS

TECHNICAL DATA.....	3
UNPACKING AND CHECKING CONTENTS.....	4
ASSEMBLY.....	5
SAFETY RULES.....	7
WIRING DIAGRAM.....	9
PARTS DIAGRAM.....	10
PARTS LIST.....	11
CERTIFICATE.....	12

**TECHNICAL DATA**

Motor power	2200 Watt
Motor speed	2950 rpm (50Hz)
Power supply	3x 400 V, 50 Hz, 4,5 A
Inlet diameter	150 mm
Number and diameter of intake holes	2x 100 mm
Filter bag size diameter X height	500 mm x 850 mm
Collection bag size diameter X height	500 mm x 850 mm
Filter bag area	1,6507 x2 m <sup>2</sup>
Pressure drop	1,95 kPa (50Hz)
Maximum Capacity	3905 m <sup>2</sup> /h (50Hz)
Noise	87,1 dB LpA
Fan diameter	305 mm
Bag capacity	0.307 m <sup>3</sup>
Overall size (LxWxH)	1450 mm x 800 mm x 2000 mm
Packing size (mm)	1170x560x570
Weight net/gross	52/57 kg

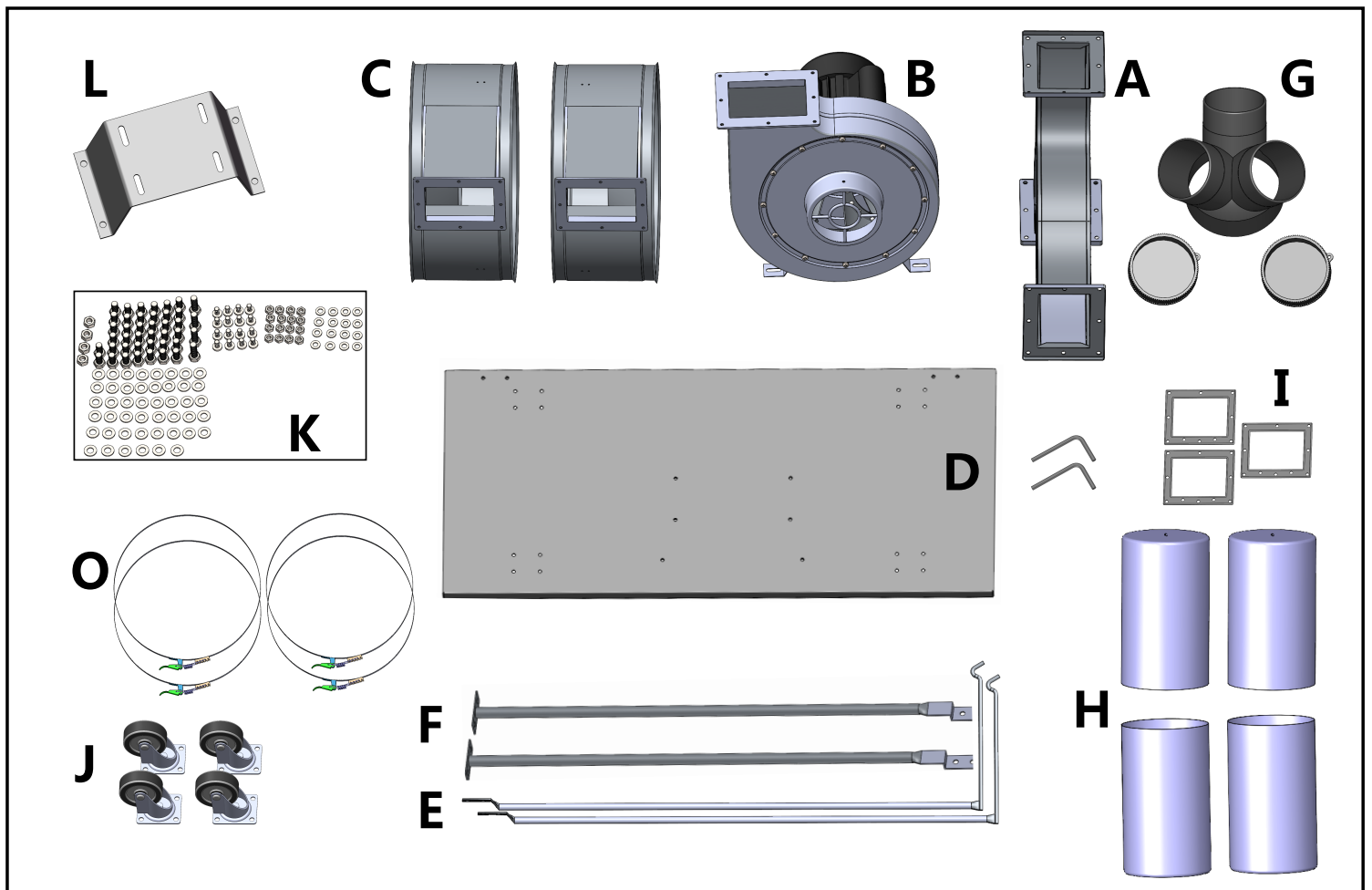
READ THIS MANUAL CAREFULLY BEFORE ASSEMBLY, TESTING AND OPERATING.

**WARNING:** DO NOT OPERATE THIS UNIT UNTIL THE PVC HOSE IS INSTALLED ONTO THE DUST INLET PORT.

## UNPACKING AND CHECKING CONTENTS

Unpack carton, check machine, to see parts listed below:

- A. CONNECTOR
- B. COLLECTOR BODY & FAN/MOTOR ASSEMBLY
- C. TWO COLLECTOR
- D. BASE PLATE
- E. TWO UPPER BAG SUPPORT
- F. TWO SUPPORT
- G. INLET
- H. FOUR BAGS
- I. PACKING
- J. FOUR CASTERS
- K. NUTS, SCREWS, WASHERS, SPRING WASHERS
- L. MOTOR BASE
- O. BAG CLAMP



## **ASSEMBLY**

To assemble, first place the base plate upside down and attach the four casters to the holes provided and tighten with wrench. Fig 1

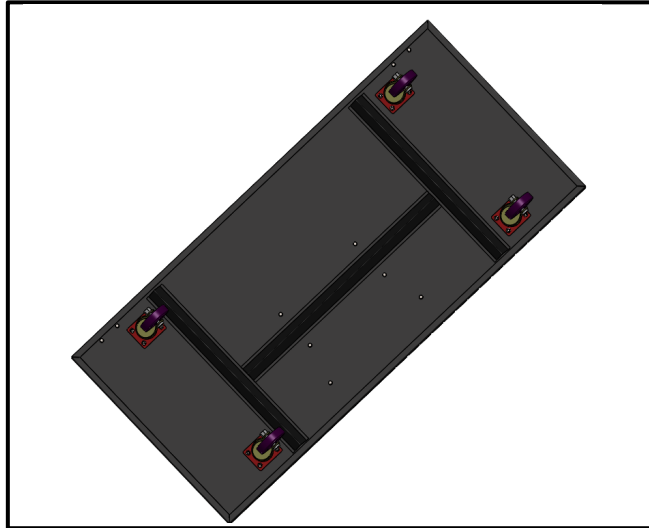


Fig 1

With the motor base, collector body & fan/motor assembly in place, secure it to the base plate using the screw and washers provided as shown in Fig 2.

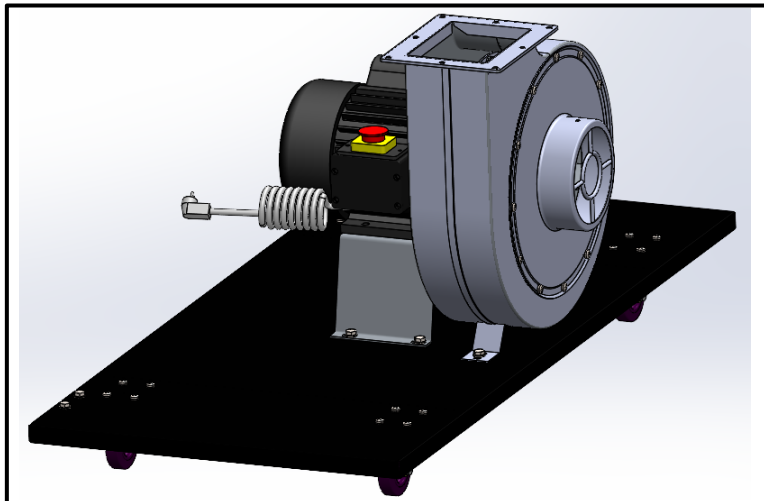


Fig 2

Install the packing and square connecting tube, connector to the collector body assembly using screw and washers provided. Fig 3 & Fig 4.

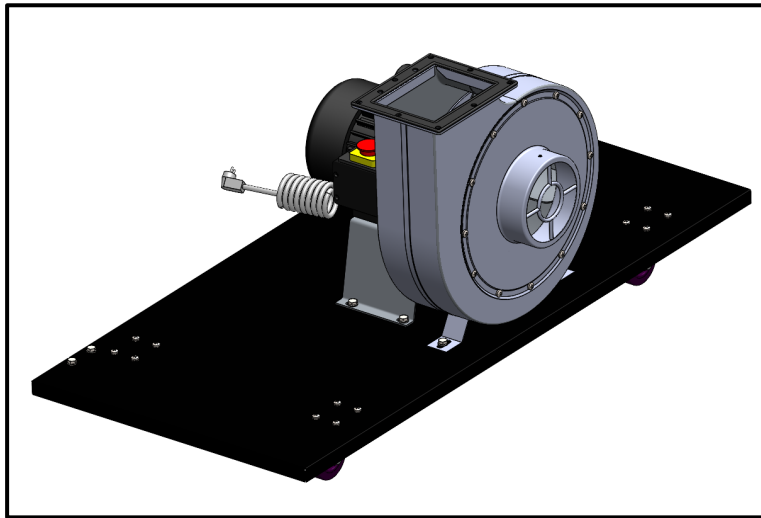


Fig 3

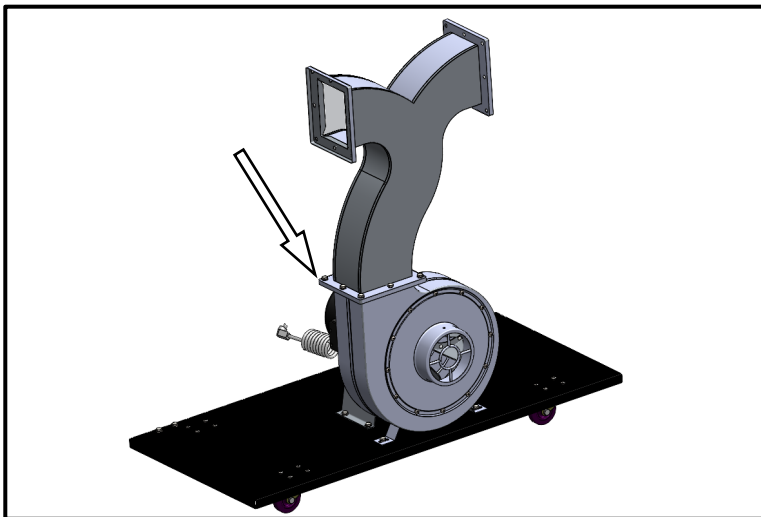


Fig 4

Next install the two collectors (C) two packing (I) to the outlet as shown in Fig5.

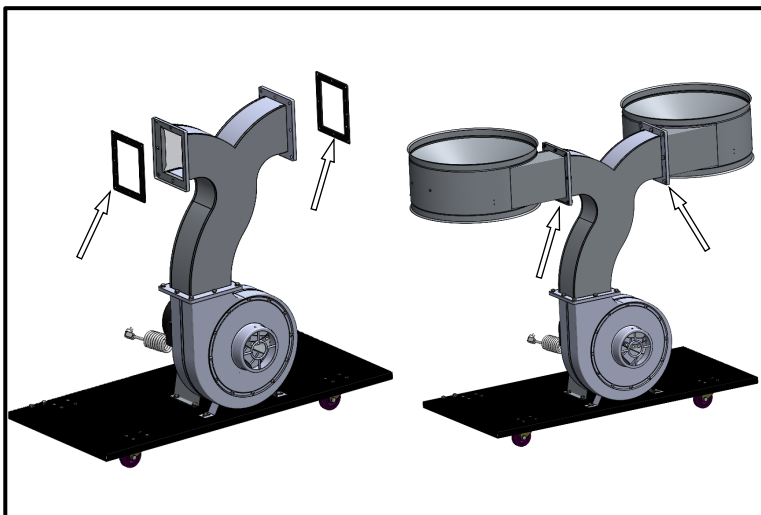


Fig 5

Install the two collector supports (F) and two upper bag support (E) as shown in Fig 6.

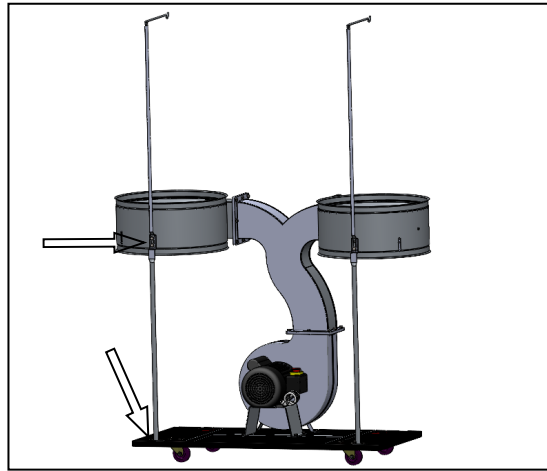


Fig 6

Next, hang the two bags (H) from the support rods. Then attach the two filter bags and two collection bags to the collectors using bag clamp.

The inlet can now be placed on the intake hole of the fan/motor assembly as shown Fig 7.

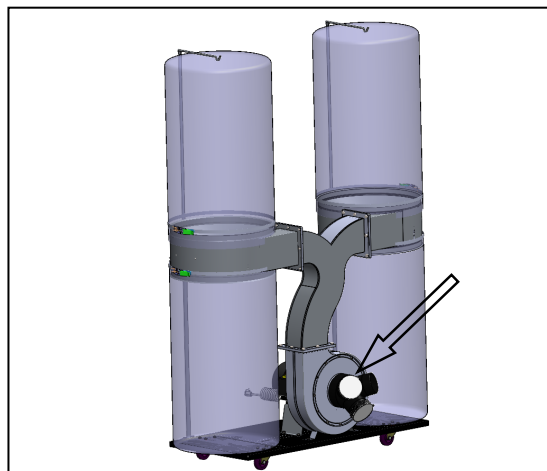


Fig 7

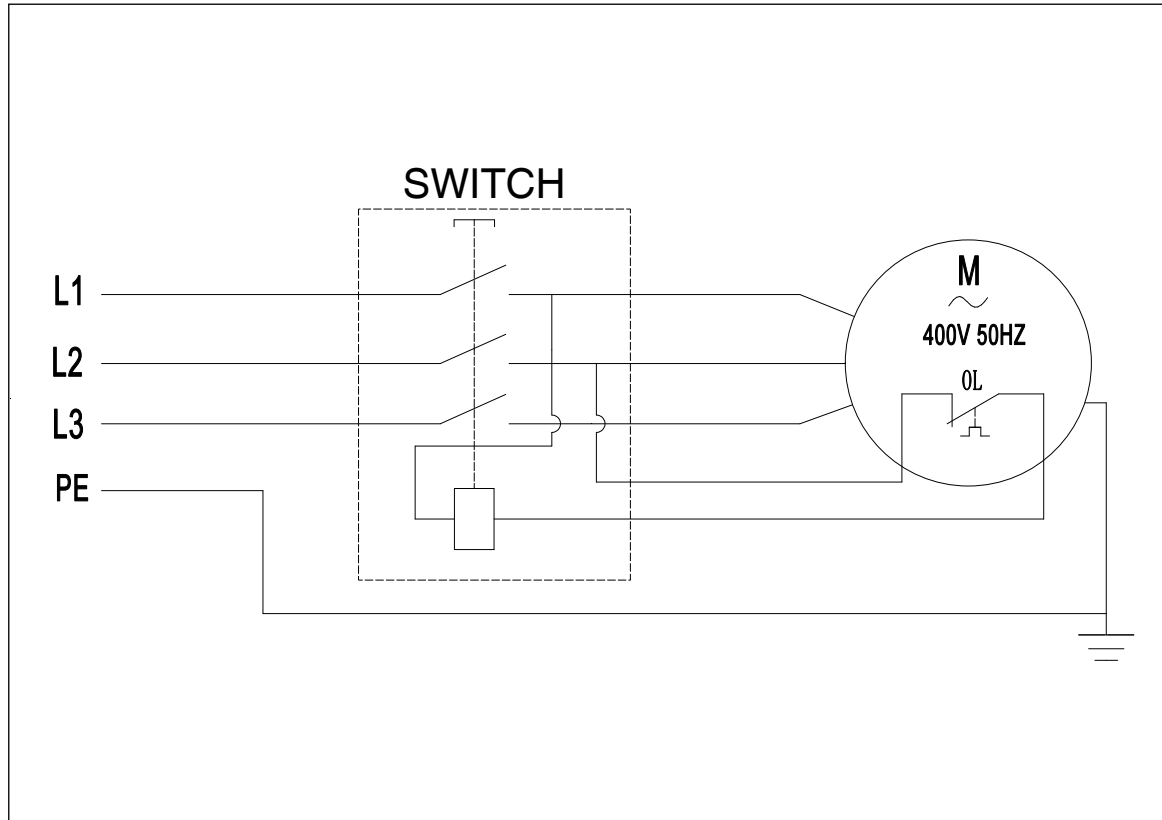
The dust collector is now ready to be placed into service. Before connecting to a power source, be sure the power source is properly grounded and is of proper voltage and amperage.

## **SAFETY RULES**

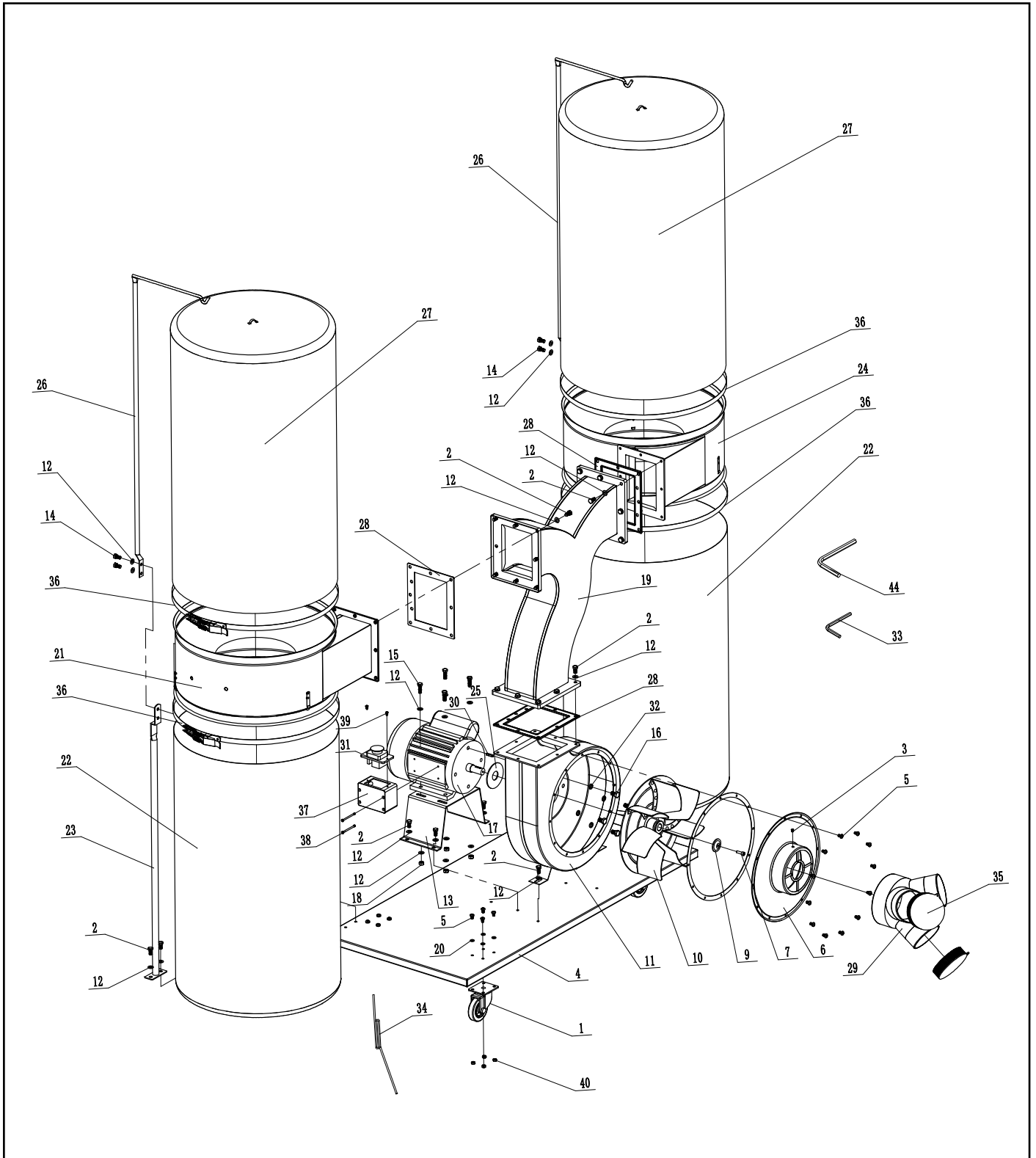
1. Read and become familiar with the entire operating manual.
2. Keep guards and cover in place and in working order.
3. Wear eye protection at all times. Use safety glasses with side shields or safety goggles, meeting the national safety standards, while operating this machine.
4. Keep work area clean and well lighted. Clutter and inadequate lighting invite potential hazards.
5. Ground all tools. If a machine is equipped with a three-prong plug, it must be plugged into a three-hole electrical outlet or grounded extension cord. If using an adapter to aid in accommodating a two hole receptacle, ground using a screw to a known ground.
6. Avoid dangerous environments. Do not operate this machine in wet or flame environments. Airborne dust particles could cause an explosion and severe fire hazard.
7. Make sure switch is in the "OFF" position before connecting power to machine.
8. Keep children and visitors away. All visitors should be kept a safe distance away while operating unit.
9. Childproof workshop with padlocks, master switch or by removing starter keys.
10. Disconnect machine when cleaning, adjusting or servicing.
11. Do not force tool. The machine will do a safer and better job at the rate for which it was designed.
12. Use correct tool. Do not force machine or attachment to do a job for which it was not designed.
13. Wear proper apparel. Do not wear loose clothing, neck ties, gloves, jewelry, etc.
14. Remove adjusting keys and wrenches. Before turning the machine on, make it a habit to check that all adjusting keys and wrenches have been removed.
15. Do not leave machine unattended. Wait until it comes to a complete stop before leaving the area.
16. Do not use dust collector for anything except wood dust. Material such as liquids, metal shavings, metal dust, screw, glass, plastic or rock can cause sparks when coming into contact with any part of the collection system.
17. Do not place your hands, lumber or tools near inlet opening while machine is running or connected to power.
18. Always wear a respirator and safety glasses when removing, emptying or replacing collection bags. Secure bags tightly to dust collector to avoid bags from "blowing off".



**WIRING DIAGRAM** (400V/50Hz, 3 phase)



## PARTS DIAGRAM



**PARTS LIST**

Part No.	Description	Part No.	Description
1	CASTER	23	COLLECTOR SUPPORT
2	SCREW	24	RIGHT-COLLECTOR
3	SCREW	25	WASHER
4	BASE PLATE	26	UPPER BAG SUPPORT
5	SCREW	27	FILTER BAG
6	INLET	28	PACKING
7	SCREW	29	INLET
8	SCREW HEX	30	KEY
9	WASHER	31	SWITCH
10	TURBO FAN	33	WRENCH HEX
11	COLLECTOR	34	CABLE
12	WASHER	35	CAP
13	MOTOR BASE	36	BAG CLAMP
14	SCREW HEX	37	SWITCH BOX
15	SCREW HEX	38	HEAD SCREW
16	BOLT	39	SCREW
17	MOTOR	44	WRENCH
18	NUT		
19	CONNECTOR		
20	SCREW		
21	LEFT-COLLECTOR		
22	COLLECTOR BAG		

**EC declaration of conformity**  
according to EC Machinery Directive 2006/42/EC, Annex II, 1.A

Manufacturer: Laizhou Planet Machinery Co., Ltd.  
Yutai West Street  
Laizhou, Shandong 261400  
P.R.C.

**We, the undersigned, hereby declare that**

- Commercial Name: **Dust Collector**
- Function: **Suction Cleaning Device**
- Item Number: **MES103EH1S-S (FM300BC), MES203EH2S-S (FM300), MES303EH4S-S (FM350)**
- No. of Manufacturer: **FM300BC, FM300, FM350**
- Serial Number: .....

**the above-mentioned devices are in conformity with the following EC directives:** :

- EC Machinery Directive 2006/42/EC Annex I
- EC Electromagnetic Compatibility Directive 2014/30/UE Annex III

**and meet the requirements of the following Harmonized Standards:**

- EN 55014-1:2006+A1+A2
- EN 55014-1:2017
- EN 55014-2:1997+A1+A2
- EN 55014-2:2015
- EN 61000-3-2:2014
- EN 61000-3-11:2000
- EN 60335-1:2012+A11+A13+A1+A14+A2
- EN 60335-2-69:2012
- EN 62233:2008

We hereby confirm that a sample of the above-mentioned technical equipment has been tested and found to be compliant with the relevant requirements.

**Notified Body:** TÜV Rheinland LGA Products GmbH - Tillystraße 2 - 90431 Nürnberg

**EC type - examination certificate No.:** AM 50460777; AE 50398634 0001

Place / Date / Authorized Person Signature

Title:

